

OMMO

Professional energy storage manufacturer

OMMO



**BALCONY ENERGY STORAGE
PORTABLE POWER STATION
RESIDENTIAL ENERGY STORAGE**

Dongguan OMMO Technology Co., Ltd.

ADD:No. 2606, Jia'anda Building, No. 110, Huafan

Road, Dalang, Longhua District, Shenzhen

Web:www.ommo.com

Email:info@ommo.com



Dongguan OMMO Technology Co., Ltd.

www.ommo.com

OMMO

Original Manufacturer of Energy Storage Products

Dongguan OMMO Technology Co., Ltd. is an industrial and trade integrated company, which is established in 2022 and located in Shenzhen, China. We focusing on the R&D and production of solar energy storage products such as storage battery, portable power stations, hybrid single phase inverter and micro inverter. With the vision of committing to provide green energy products and solutions to everyone to achieve sustainability and reduce household costs.

Our factory was founded in 1996 and is located in Dongguan, China. We have two self-built factories with a total area of 30,000 square meters. The factory has complete equipment from mold manufacturing, injection molding, SMT/DIP, spraying and printing, to finished product assembly. With 20+ production lines, 50+ products technical development personnel, and 600+ workshop manufacturing operators. We provide ODM and OEM services to globe customers in Europe, America, Japan, Southeast Asia, etc.

OMMO TECH certifications: CE, RoHs, MSDS, IEC, UN38.3, etc.



Production Site



**Class 100,000
Cleanroom**

**10 Automated Battery
Assembly Lines**

**4 Dedicated Aged
Testing Lines**

Production Qualifications





**Enjoy life with portable power station.
Indoor Emergency Power Supply.
Outdoor Adventure Power Support.**

OMMO

Portable Power Station



Portable power station is a portable power device that integrates power generation, storage and discharge. It is composed of LiFePO4 battery, intelligent management systems and multiple output interfaces. It can provide stable power support for various electrical and electronic equipment, especially suitable for outdoor activities, emergency power outages, RV/yacht backup power supply and professional equipment power supply.

- Environmentally friendly and pollution-free, more energy-efficient than traditional fuel generators.
- Easy to operate, plug and play, no complicated settings required.
- Applicable to a variety of scenarios to meet user's diversified power needs.

Product Specification

Model	OM-2400
Colour	Gray
Net weight	25Kg
Gross weight	29kg
Dimension	L512mm*W336mm*H412mm
Charging temperature range	0~50°C±3°C
Discharging temperature range	-15~60°C±3°C
Storage temperature range	0~40°C(20°C~30°C best)
Working humidity range	10~90%
Battery capacity	2048Wh(40Ah)
Battery type	LiFeP04
Cycle life	4500 Cycles @80%
Certificate	CE, RoHS, MSDS, UN38.3

OM-2400

Portable power station



BMS intelligent battery management



Lithium iron phosphate battery



Product Parameters

Cigarette LighterX 1	12VDC/10A
DC5521 X 2	12VDC/10A
USB-A X 2	5V/2.4A,9V/2A,12V/1.5A,MAX18W 36W in total
USB-C(Type-C)x 4	5/9/12/15/20VDC,3A;20VDC,5A MAX100W
Wireless charging X 1	7.5W/10W/15W
Rated output power	2400W
Rated output voltage	230V/120Vac/100Vac
Rated output current	10.5A/20A/24A
Rated output frequency	50Hz/60Hz
Peak output power	4800W



Capacity Expansion

Maximum stacking of 5 batteries



- Up to 10KWh expandable capacity**
 Portable energy storage power supplies typically have a large capacity for electricity storage, which can meet the charging needs of devices such as smartphones, tablets, laptops, and wireless routers.
- Diverse output interfaces**
 The portable energy storage power supply is equipped with multiple USB ports, DC output ports, and AC output ports, which can meet the charging and power supply needs of various devices.
- Multiple charging methods**
 The portable energy storage power supply can be charged through traditional power sockets, and it can also be charged using solar panels, car chargers, and other devices. This allows for convenient charging and usage even in outdoor environments without access to power sources.
- High-strength metal retractable handle
Whisper-quiet dual wheels**
 The customized high-strength metal retractable pull rod has a heavy load-bearing capacity, and the handle is ergonomically designed, the wheel is made of special plastic material to reduce noise.
- Safe and reliable**
 The portable energy storage power supply features an efficient battery management system (BMS) that ensures the safety of the battery and provides a stable output current. This system prevents equipment damage caused by excessive current or unstable voltage.

Multiple interfaces

Output: USB-A, Type-C, AC outlet.
Input: AC, solar panel, car charging.

Portable design

Easy to carry; Three stage free-retractable trolley.
Quiet and wear-resistant rubber wheels.

High-efficiency bidirectional inverter

Super fast charging speed, UPS<20ms.

Mutiple intelligent protection BMS

Real-time monitoring of battery status to ensure safety.

LCD Screen

Real-time display of various indicators.

Intelligent temperature-controlled cooling fan

Monitoring battery temperature and efficient cooling off.

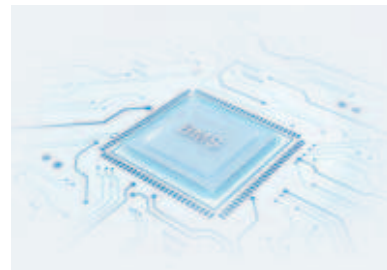


Product Specification

Model	OM-600
Colour	Gray
Net weight	6.5Kg
Gross weight	8.9kg
Dimension	345*215*218mm
Charging temperature range	0~50°C±3°C
Discharging temperature range	-15~60°C±3°C
Storage temperature range	0~40°C(20°C~30°C best)
Working humidity range	10~90%
Battery capacity	512Wh(20Ah)
Battery type	LiFePO4
Cycle life	4500 Cycles @80%
Certificate	CE, RoHS, MSDS, UN38.3

OM-600

Portable power station



BMS intelligent battery management



Lithium iron phosphate battery

Product Parameters

Cigarette LighterX 1	12VDC/10A
DC5521 X 2	12VDC/10A
USB-A X 2	5V/2.4A,9V/2A,12V/1.5A,MAX18W 36W in total
USB-C(Type-C)x 4	5/9/12/15/20VDC,3A;20VDC,5A MAX100W
Wireless charging X 1	7.5W/10W/15W
Rated output power	600W
Rated output voltage	220~240Vac/120Vac/100Vac
Rated output current	2.6A/5A/6A
Rated output frequency	50Hz/60Hz
Peak output power	1200W



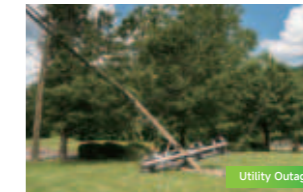
Scenarios



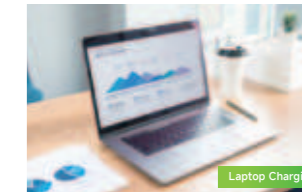
Camping/Traveling



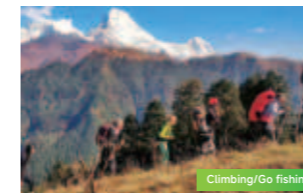
RV Travel



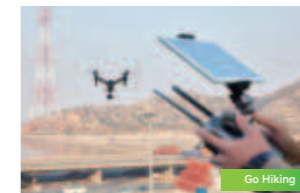
Utility Outage



Laptop Charging



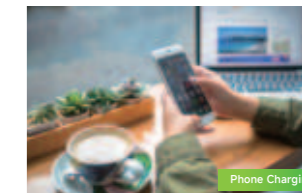
Climbing/Go fishing



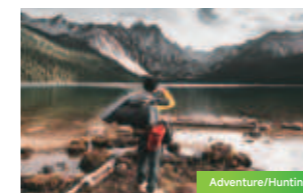
Go Hiking



Hurricane



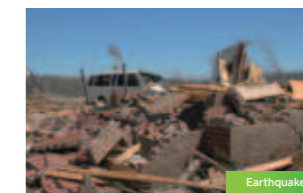
Phone Charging



Adventure/Hunting



Drones



Earthquake



Home Appliances

Outdoor Activities

Power Backup

Emergency

Home

Light-weight and portable

Easy to carry with 6.5kg, full of energy anytime and anywhere.

Multiple interfaces

Output: USB-A, Type-C, Cigarette lighter, AC outlet
Input: AC, solar panel, car charging.

High-efficiency bidirectional inverter

Super fast charging speed, UPS<20ms.

Multiple intelligent protection BMS

Real-time monitoring of battery status to ensure safety.

LCD Screen

Real-time display of various indicators.

Intelligent temperature-controlled cooling fan

Monitoring battery temperature and efficient cooling off.



2kWh Battery

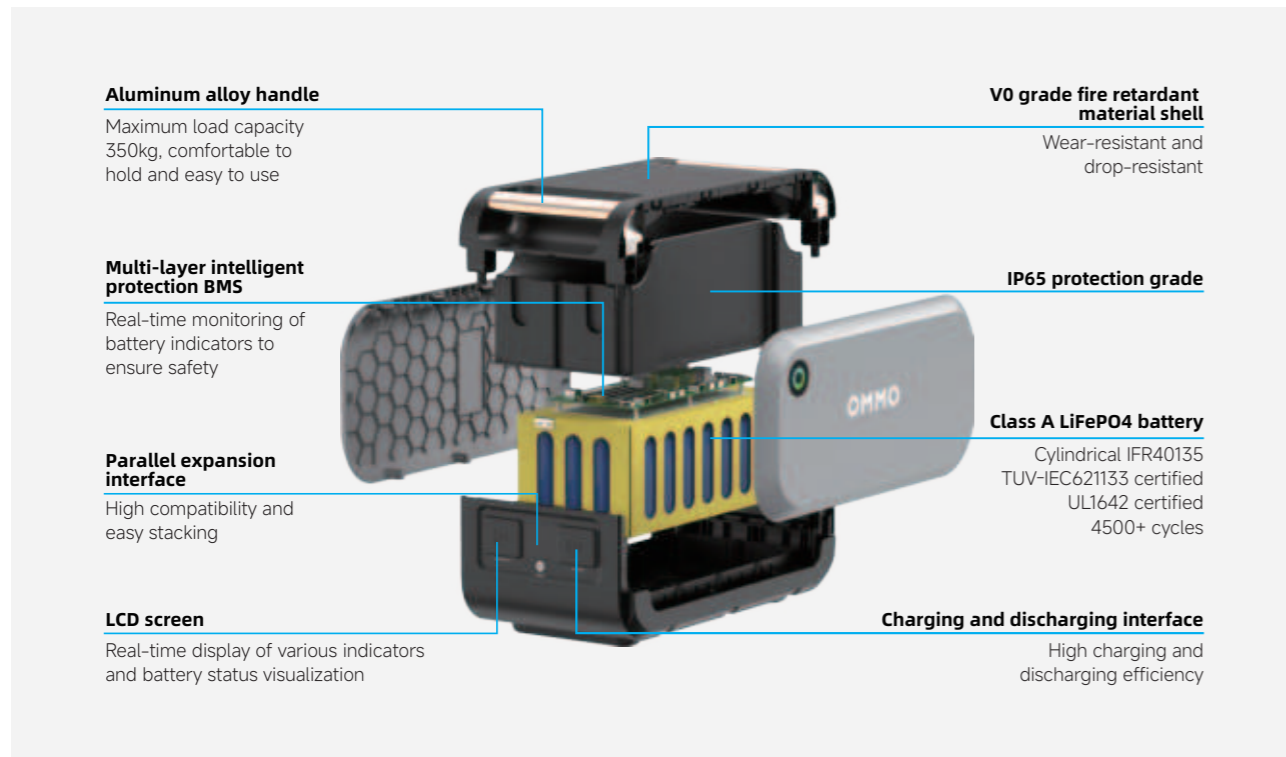


Product Specification

Battery type	LiFePO ₄
Net weight	18.5Kg
Dimension	498*287*250mm
Watt-hour	2048Wh
Rated capacity	40Ah
Minimum capacity	≥39Ah
Rated voltage	51.2V
Battery IR	IR≤30mΩ
Charging voltage	58.4V
Charging cut-off current	0.8A
Standard charging	28A
Standard discharging	40A
Max. continuous discharge current	≤55A
Battery operating voltage	40V-58V
Cycle life	≥4500 cycles
Charging temperature	0~40°C
Discharging temperature	-10~40°C



2400W Portable Power Station with Battery



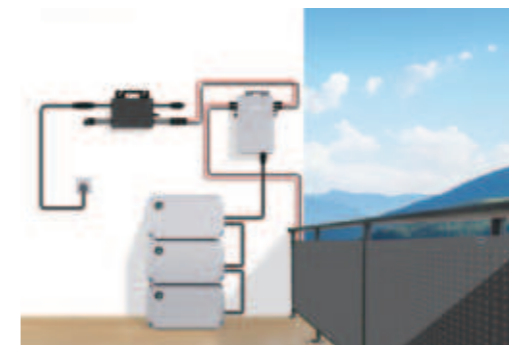
Balcony Energy Storage System



**Balcony/Household/Apartment
energy storage system
Store POWER, Release POWER,
Intelligent management**

OMMO

Balcony Energy Storage System



The balcony energy storage system is installed on balcony, including 4 parts: solar panels, micro-inverters, PV Hub, and battery.

- Easy installation: Compared with traditional rooftop photovoltaic systems, the key feature of balcony energy storage system is plug-and-play, simpler and more flexible.
- Significant profit: it generates electricity during the day and release power at night when there is no sunlight. The installation of balcony energy storage system, can make significant profits from the price difference.

OMMO Balcony Energy Storage Kit

2kWh Battery



Product Specification

Battery type	LiFePO4
Net weight	18.5Kg
Dimension	498*287*250mm
Watt-hour	2048Wh
Rated capacity	40Ah
Minimum capacity	≥39Ah
Rated voltage	51.2V
Battery IR	IR≤30mΩ
Charging voltage	58.4V
Charging cut-off current	0.8A
Standard charging	28A
Standard discharging	40A
Max. continuous discharge current	≤55A
Battery operating voltage	40V~58V
Cycle life	≥4500 cycles
Charging temperature	0~40°C
Discharging temperature	-10~40°C

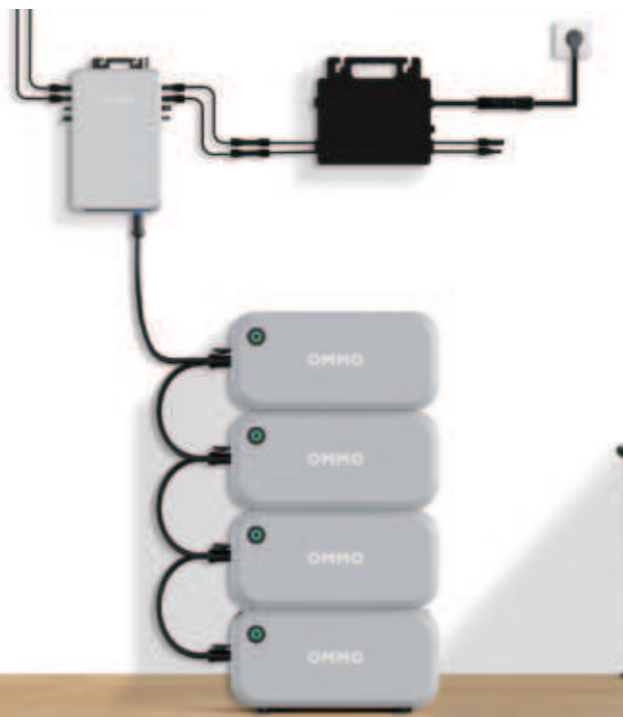


1200W PV-HUB

Product Specification

Model	OM-1200-PV-HUB
Color	Silver
Dimension	375×220×60mm
Net weight	3.2kg
Input voltage range	12V~60V
PV Input power	600W×2 Max
Output voltage range	18V~55V
Output power	600W×2 Max
Battery voltage range	40V~58.4V
Charging power	1200W Max
EMC grade	CLASS-B
IP protection	IP67
Peak efficiency	0.98
MPPT tracking efficiency	0.99
Short circuit current	66A
Operating temperature	-20°C~45°C
Communication	RS485、CAN
WiFi	Yes
Anti back-feed	Yes

1. LiFePO4 battery with 4500 cycles to 80% DOD.
2. IP65 & 0dB Noise Design.
3. Customized BMS to intelligently control and manage various battery performances to ensure safe, stable and long-life operation of the battery.
4. Plug and play, hassle-free. Up to 5 expandable batteries (10.24kWh), the best energy solution for home, small business projects, etc.



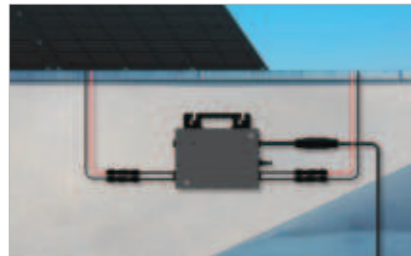
1. MPPT Tracking Efficiency of 99%. 1200W MPPT supports up to 1600W solar panel, allowing higher wattage panels for increased energy harvest and system design flexibility.
2. It has anti-backflow function to protect the safety of the power grid and prevent electricity waste.
3. Intelligent eco-energy management: OMMO APP;

OMMO Balcony Power Plant

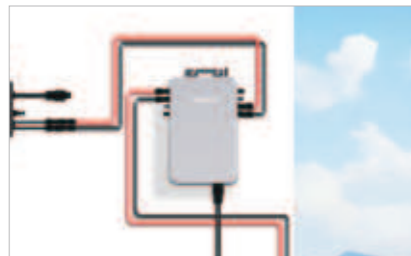
Balcony Energy Storage System



200W Flexible solar panel



800W Micro inverter



1200W PV-HUB



2KWh Battery



Smart meter (Optional)

Specifications

Spec/Model	OM-200QH70S	Dimension (L×W×H)	1270×900×2.5mm
Max-Power(Pm)	200W	Weight	3.4 kg
Power Tolerance	0~+5W	Back material	Back Sheet(black)
Max-Power Voltage(Vm)	19.8V	Cell	70(5×14)/Mono/166*83mm /φ223mm
Max-Power Current(I _m)	10.11A	Junction box(Protection degree)	IP68
Open-Circuit Voltage(Voc)	23.9V	Cable (length/cross-section area)	4mm ² /Customized
Short-Circuit Current(I _{sc})	10.65A	Connector	MC4 Compatible
Effective Module Efficiency(η _m)	20.40%		

STC: AM=1.5, Irradiation 1000W/m², Module Temperature 25°C

Specifications

Model	OM-L800Mi	Nominal Output Voltage	230V
PV Module Power	280W-550W	Extended Output Voltage Range	184V-253V
Start-up Voltage	20V	Max. Output Current	3A / 4A
MPPT Voltage Range	25-55V	Nominal Output Current	3.47A
Max. Input Voltage	60V	Nominal Frequency/Range	50Hz/45 - 55
Max. Input Current	13.5A*2	Power Factor	>0.99 default
Max. DC Short Circuit Current	16.5A*2	Total Harmonic Distortion (THD)	<3%
Number of MPPTs	2	Max. Units Per Branch	5 / 5
Rated Output power	800W		

Specifications

Cell model	OM-1200-PV-HUB	Battery voltage range	40V-58.4V
Colour	Silver	EMC Grade	CLASS-B
Dimension	375×220×60mm	Peak efficiency	98%
Net weight	≈3.2kg	MPPT tracking efficiency	99%
PV input voltage range	12V-60V	Battery short circuit protection current	66A
Battery charging power	1200W Max	Working temperature	-20°C~45°C
PV input power	600W×2 Max	RS485、CAN communication	support
Output voltage range	18V-55V	WiFi communication	support
Output Power	600W×2 Max		

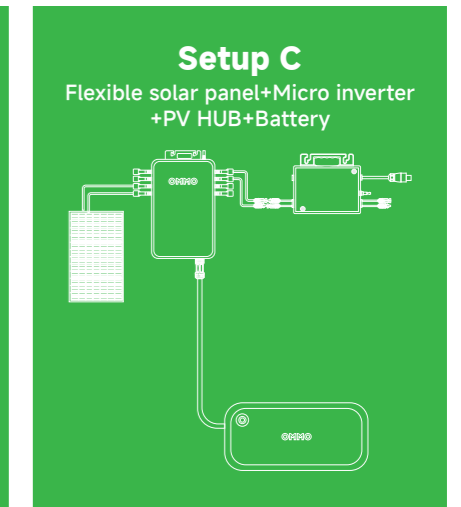
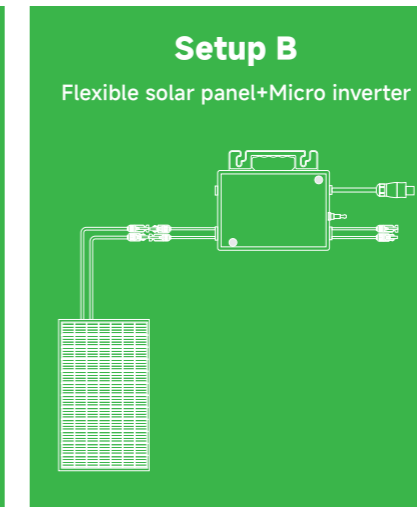
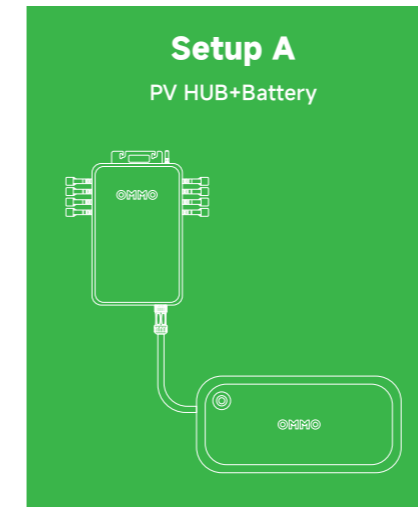
Specifications

Battery type	LiFePO ₄	Standard charging current	28A
Net weight	18.5Kg	Standard discharging current	40A
Dimension	498*287*250mm	Max. continuous discharge current	≈55A
Watt-hour	2048Wh	Battery operating voltage	40V-58V
Rated capacity	40Ah	Cycle life	≥4500 cycles @80%
Minimum capacity	≥39Ah	Charging temperature	0~40°C
Rated voltage	51.2V	Discharging temperature	-10~40°C
Battery IR	IR≤30mΩ	Storage temperature	0~40°C
Charging voltage	58.4V	Storage humidity	10~90%

Specifications

Model	SMeter-RC01
Dimension	62*19*81mm
Weight	220g
Power	AC100-240V/ 50/60Hz
Working current	CT 50A
Working temperature	-20°C ~ +55°C
Storage temperature	-30°C ~ +65°C
Working humidity	5%-95%,no condensation
Protection grade	IP 20
Certificate	RoHS、CE、UKCA

Play and plug, Easy DIY Installation





96% High efficiency up to 96% with 2 individual MPPTS

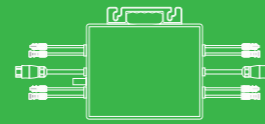
IP67 IP 67 protection, die cast design

60V High safety with max DC voltage 60V

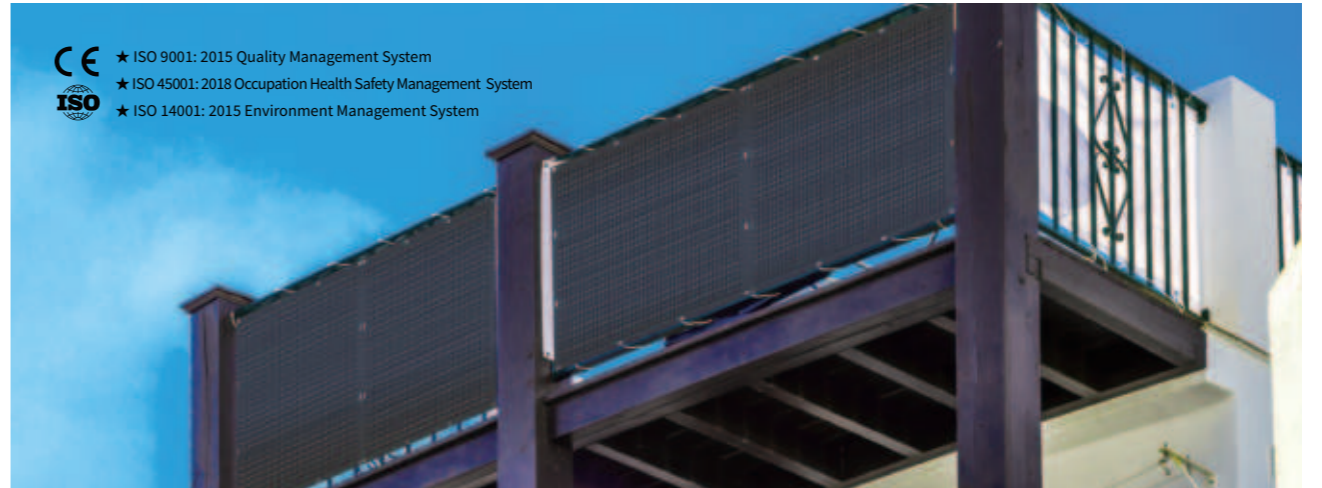
Easy installation of plug and play

Integrated smart monitoring & communication system

Micro inverter



★ ISO 9001: 2015 Quality Management System
 ★ ISO 45001: 2018 Occupation Health Safety Management System
 ★ ISO 14001: 2015 Environment Management System



Light, Thin design
3.4kg weight, match various requirements for low-load projects

High Efficiency And Reliability
Busbar-free design increases cell conversion efficiency, more power output can be achieved at low irradiance conditions

Ultra Flexible
Ultra-thin silicon wafers with advanced organic polymer encapsulation materials, minimum bending radius reach 0.30m, fit all kinds of curved surface perfectly

Convenient Installation
Easy installation and convenient transportation with lower cost

Lead-free
Eco-friendly PV design achieves lead-free MWT module without soldering materials

Full Black
All black design for more elegant applications

Flexible Solar Panel



800W Micro inverter

Specifications

Model	TM-L800Mi
Pv recommended power	280W-550W
Start-up Voltage	20V
MPPT Voltage Range	25-55V
Number of MPPTs	2
Rated Output power	800W
Nominal Output Voltage	230V
Extended Output Voltage Range	184V-253V
Nominal Frequency/Range	50Hz/45 - 55
Total Harmonic Distortion (THD)	<3%
Max. Units Per Branch	5

Ambient Temperature Range	-40°C ~ +65°C
Dimensions(WxHxD)	260*225*32mm
Weight	2.9kg
Enclosure Rating	IP 67
Communication	WiFi
Energy Management	Solarman
Warranty	10 Years Standard



1600W/1800W Micro inverter

Specifications

Model	TM-L1600M/TM-L1800M
Pv recommended power	280W-600W
Start-up Voltage	28V
MPPT Voltage Range	28-55V
Number of MPPTs	4
Rated output power	1600W/1800W
Nominal Output Voltage	~L/N/PE,230V/220V
Extended output voltage	184V-253V/176V-242V
Frequency range	50Hz/45 - 55,60Hz/55 - 65
Total Harmonic Distortion (THD)	<3%
Max. Units Per Branch	3

Ambient Temperature Range	-25°C to +65°C
Dimensions(WxHxD)	312*301*43mm
Weight	7kg
Enclosure Rating	IP 67
Communication	WiFi
Energy Management	Solarman
Warranty	10 Years Standard



2000W Micro inverter

Specifications

Model	TM-L2000M
Pv recommended power	280W-650W
Start-up Voltage	28V
MPPT Voltage Range	28-55V
Number of MPPTs	4
Rated output power	2000W
Nominal Output Voltage	~L/N/PE,220V
Extended Output Voltage Range	176V-242V
Frequency Range	60Hz/55 - 65
Total Harmonic Distortion (THD)	<3%
Max. Units Per Branch	3

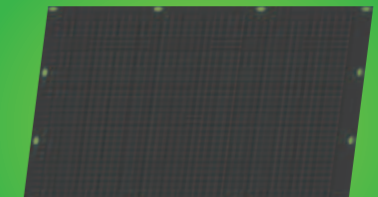
Ambient Temperature Range	-25°C to +65°C
Dimensions(WxHxD)	312*301*43mm
Weight	7kg
Enclosure Rating	IP 67
Communication	WiFi
Energy Management	Solarman
Warranty	10 Years Standard



200W Flexible Solar Panel

Specifications

Spec/Model	SPP200QH70
Module size (LxWxH)	1270mm×900mm×2.5mm
Weight	3.4kg
Back material	Back Sheet(black)
Cell (quantity/ material/type/dimensions)	70(5×14)/Mono/166*83mm/p223mm
Frame	None
Junction box(Protection degree)	IP68
Cable (length/cross-section area)	Customizable/ 4mm ²
Connector	MC4 Compatible
Max-Power(Pm)	200W
Power Tolerance	0~+5W
Max-Power Voltage(Vm)	19.8V
Max-Power Current(I _m)	10.11A
Open-Circuit Voltage(Voc)	23.9V
Short-Circuit Current(I _{sc})	10.65A
Effective Module Efficiency(nm)	20.40%



380W Flexible Solar Panel

Specifications

Spec/Model	SPP380QHES
Installation Module Dimension (LxWxH)	1850mmx1070mmx2.5mm
Weight	5.7kg
Back material	Back Sheet(white)
Cell (quantity/ material/type/dimensions)	126(21x6)/Mono/Half-cell
Encapsulant	POE
Frame	None
Junction box (Protection degree)	IP68
Cable (length/cross-section area)	Customizable/4mm ²
Connector	MC4 Compatible
Bendingradius	0.3m
Max-Power(Pm)	380W
Power Tolerance	0~+5W
Max-Power Voltage(Vm)	35.5V
Max-Power Current(I _m)	10.70A
Effective Module Efficiency(nm)	21.50%